



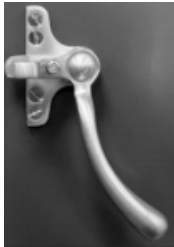
FABCO

Windows - Furniture Options

Side Hung Casements

The images below show the three options of handles available. As standard we quote for Satin Brass Unlacquered but other finishes are available (see page 3 for complete list).

Please note if your window is over 1500mm high you will require a duplex handle set.



Soho



Deco



Phoenix



Duplex

Peg Stays

The minimum size window we can offer for a stay is 365mm wide.

Side Hung:
0372 Non-locking
Top Hung:
0373 Locking
Standard item.

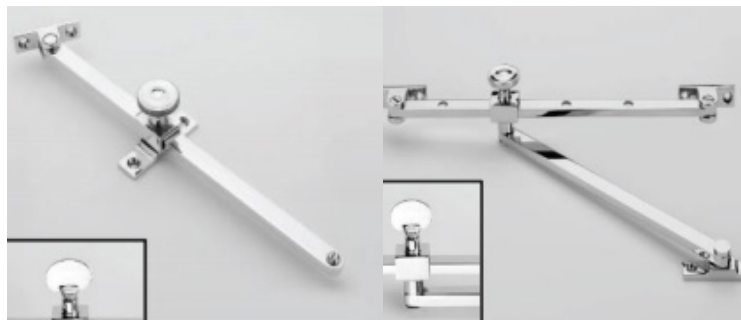
Side Hung:
9570 Non-locking
Top Hung:
9571 Locking
Additional Cost: POA



Sliding Stays

Side Hung: 8018
Knurled Knob
Sliding Stay/ 8017
Gas Tap Sliding
Stay.

Additional Cost:
POA



For side hung casements over 650mm wide, you will require a double arm stay.

They will have screw down holes to restrict the window.
FS1031 Knurled Knob Sliding Stay/ FS1035 Gas Tap Sliding Stay



FABCO

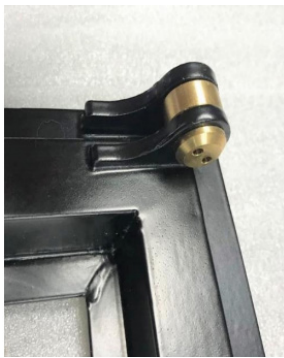
Windows - Hinge Options

Side Hung Casement Hinges

You have 2 different hinges available for the side hung opener.

Standard Hinge: These are the standard hinge and therefore already included in the cost.

Projection Hinge: The projection hinge has acquired this name as they have the facility to project further than the standard hinge. (POA)



Standard



Projection

Top Hung Casement Hinge

On a Top Hung casement, next to a door opening, we will always advise using the B528M hinge if you still require your doors to fold to 180 degrees. They sit slightly flusher to the framework and provide a discrete look as they will be PPC the same colour as the frame.

Fanlight Catch

Used on Bottom Hung windows and Pivot windows.



Top Hung Casement



Fanlight Catch



FABCO

Options and Technical Specification - Furniture Finishes

Your quotation will include our standard furniture finish. Once you have selected your furniture you will have to select the finish you like. There are seven finishes you can pick from, listed below.



Satin Brass Unlacquered (SBU)

A satin polished solid brass surface treated with a thin beeswax coating for protection during transit and installation. An unlacquered living finish, intended to oxidize and patina naturally over time.

An occasional light application of a good quality wax will assist in keeping the finish in good condition.



Satin Chrome (SC)

A satin chromium plate on top of a nickel plates, sateen polished, solid brass surface. Chromium plating is a very hard wearing, stable finish, suitable for most environments.

An occasional light application of a good quality wax will assist in keeping the finish in good condition. Metal polish can be used if desired.



Polished Chrome (PC)

A bright chromium plate on top of a nickel plates, highly polished mirror finish, solid brass surface. Chromium plating is a very hard wearing, stable finish, suitable for most environments.

An occasional light application of a good quality wax will assist in keeping the finish in good condition. Metal polish can be used if desired.



Antique Brass (ABU)
(unlacquered)

A sateen polished solid brass surface given a hand applied medium antique patina, producing a soft, slightly reflective, sheen. Threated with a thin beeswax coating for protection during transit and installation. An unlacquered living finish, intended to oxidize and patina naturally over time.

An occasional light application of a good quality wax will assist in keeping the finish in good condition.



Dark Matt Bronze (DMB)

Dark bronze patina over copper plated, sateen polished solid brass which is then coated with a decorative matt lacquer to give a dark matt appearance.

An occasional light application of a good quality wax will assist in keeping the finish in good condition.



Matt Black Chrome (MBC)

A deep matt black chromium plating on top of a specially prepared surface producing a flat non-reflective finish. Chromium plating is a very hard wearing, stable finish, suitable for most environments.

An occasional light application of a good quality wax will assist in keeping the finish in good condition. Metal polish can be used if desired.



Satin Nickel Bronzed (SNB)

A satin nickel-plated surface given a light bronze patina to produce an aged nickel silver appearance. This is a living finish, intended to oxidize and patina naturally overtime.

An occasional light application of a good quality wax will assist in keeping the finish in good condition.